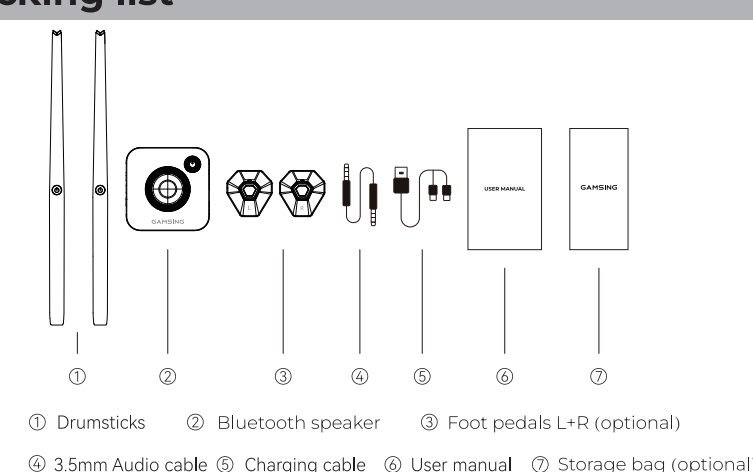


GAMSING

# AIR DRUM

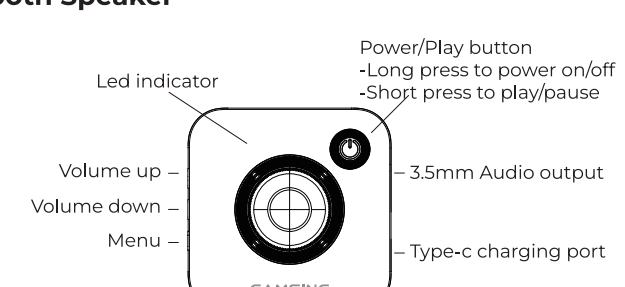
USER MANUAL

## Packing list

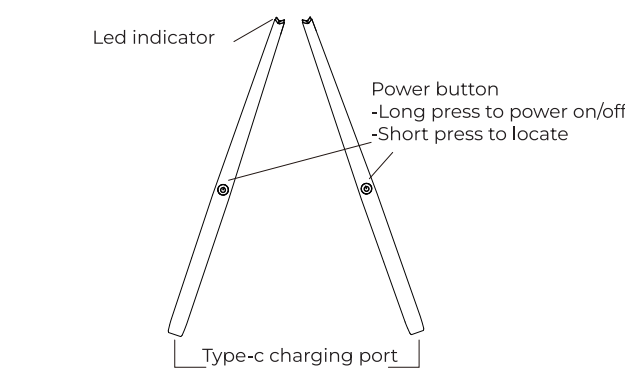


## Product introduction

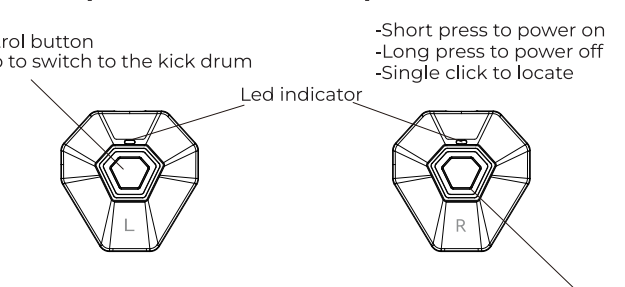
### A. Bluetooth Speaker



### B. Drumsticks



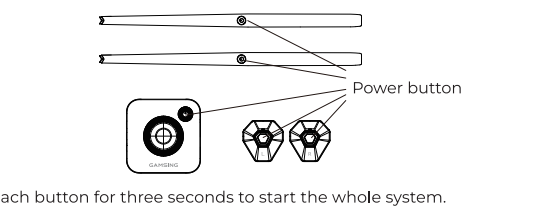
### C. Foot Pedals (Kick Drum & Hi-Hat)



- The 'H' pedal (resembling a triangle-shaped clamp) serves as the kick drum in a drum set and is positioned for the right foot. It's activated by tapping or pressing down to produce the kick drum sound.
- The 'L' pedal (resembling a triangle-shaped clamp) functions as the hi-hat (spare hi-hat) and is positioned for the left foot. Lifting the foot opens the hi-hat, while lowering it closes it.

## Product use

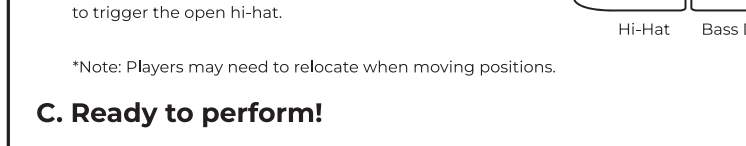
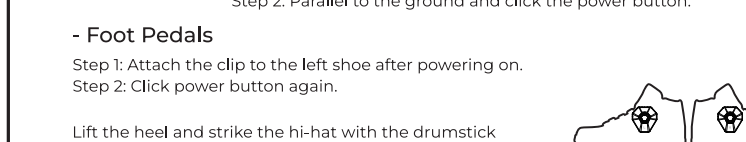
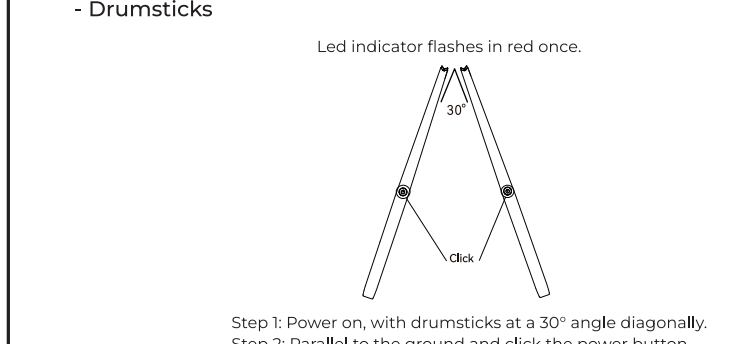
### A. Power on



### - Led Indicator

Drumsticks	Hi-Hat	Kick Drum	Charging	Bluetooth	Speaker
Red	Red	Red	Red	Red	Red
Green	Green	Green	Green	Green	Green
Blue	Blue	Blue	Blue	Blue	Blue
Yellow	Yellow	Yellow	Yellow	Yellow	Yellow
Purple	Purple	Purple	Purple	Purple	Purple
Pink	Pink	Pink	Pink	Pink	Pink
White	White	White	White	White	White

### B. Positioning



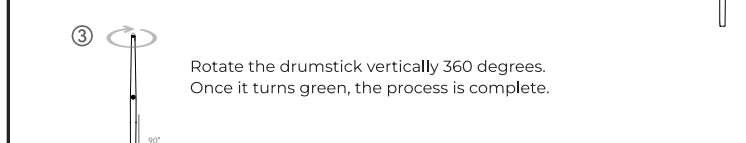
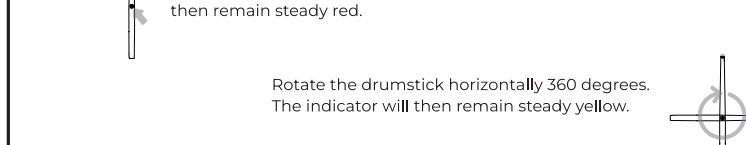
### C. Ready to perform

Note: To use your phone's input for accompaniment, just turn on Bluetooth and connect to the Bluetooth speaker. GAMSING can provide their play your music using any app on your phone.

### D. Tips

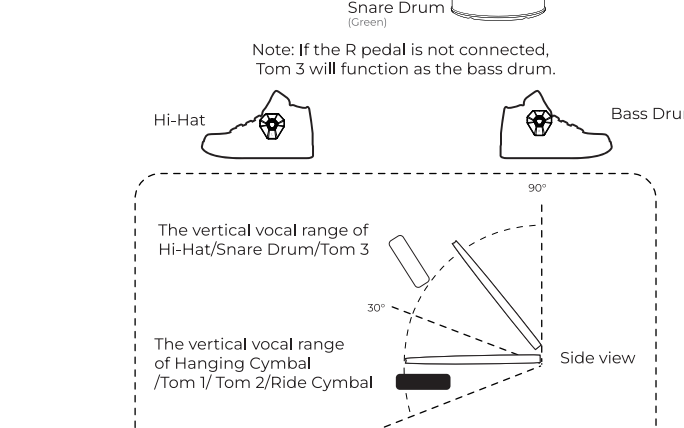
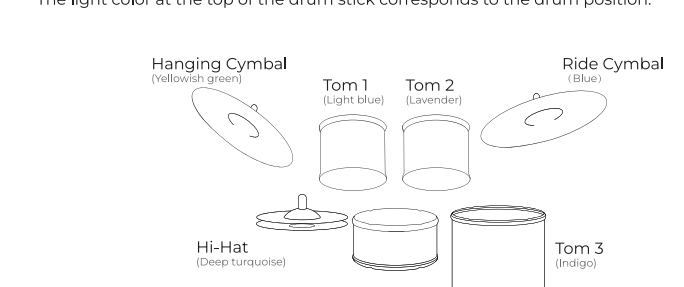
#### - Geomagnetic calibration

Due to variations in magnetic fields across different regions, we recommend performing geomagnetic calibration upon receiving the product.



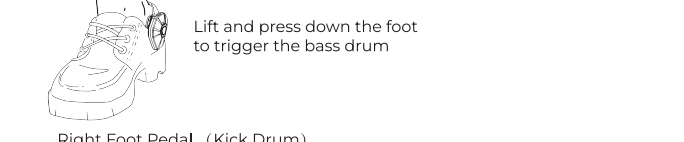
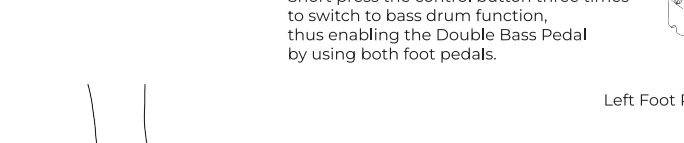
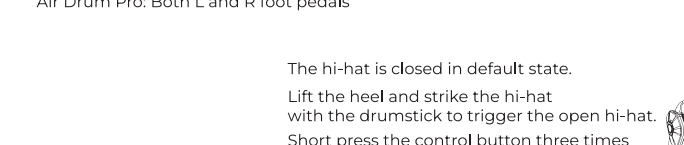
## The Placement of the Air Drums

The light color at the top of the drum stick corresponds to the drum position.

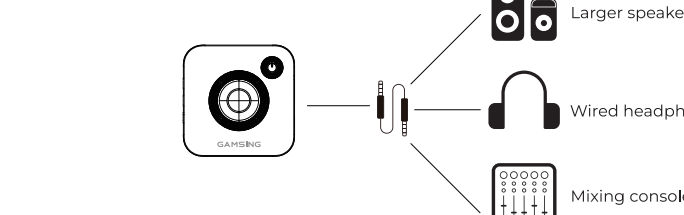


### - Foot Pedal Installation and Operation

Note: Different versions come with different configurations. Air Drum No. 100 includes include: Hi-Hat, Kick Drum, and Hi-Hat pedal.



### - Support for connecting to more devices



### Basic Parameters

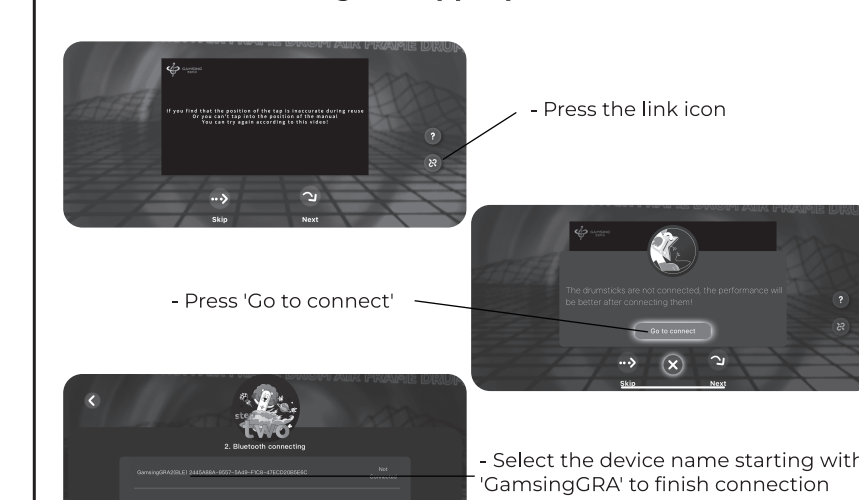
Drumsticks	Hi-Hat	Kick Drum	Speaker	Power
Material	Wood	Wood	3.5mm	500mAh
Weight	100g	100g	100g	100g
Color	Red	Red	Red	Red
Size	100mm	100mm	100mm	100mm
Package	100mm	100mm	100mm	100mm
Accessories	100mm	100mm	100mm	100mm
Warranty	100mm	100mm	100mm	100mm
Notes	100mm	100mm	100mm	100mm

## Connect to App

### A. Download the 'GAMSING' App via:

- Scan the QR code to jump to the download interface.
- For iPhone users: Search for 'GAMSING' in the App Store to download the application.
- For Android users: Search for 'GAMSING' in the Google Play Store to download the application.

### B. After downloading the App, open it to connect



### Frequently Asked Questions (FAQ)

- Does it support headphones?**  
It supports 3.5mm wired headphones.
- How to connect to other speakers?**  
Use a 3.5mm audio cable to connect the provided speaker to your own speaker.
- How to find drum positions precisely?**  
Please watch the instructional videos in the app to master the drumming techniques required. Follow the calibration instructions in the application. You need to recalibrate regularly because different playing modes or long-term playing may cause inaccurate drum position recognition. Always perform positioning before each use.
- What is the charging time and playtime?**  
It takes approximately one hour to fully charge the battery. When all product indicators are constant green, the battery is fully charged. A fully charged product can be used continuously for about 4-6 hours.
- Are they waterproof?**  
All devices are not waterproof, please keep away from water sources.
- How to switch the cymbal to the bass drum for Double Bass?**  
Press the left foot pedal three times quickly to switch between two modes.
- Can drum-beginners play?**  
After following the instructional videos in the 'GAMSING' application, you will be able to master it soon.
- Can I personalize the position of each drum or change drum tones?**  
We are still developing this feature and it is currently in the testing phase. Disconnect the Bluetooth connection between the speaker and the phone.
- What should be paying attentions during magnetic calibration?**  
When starting the magnetic field nearby sources of interference and keep a distance of at least 40cm from the air drum speaker.
- What causes inaccurate drumming position and how do I solve it?**  
Avoid an empty near potential interference sources like Wi-Fi routers, Bluetooth speakers, mobile phones, etc. or magnets. Strong signals cause more disruption. Keep the foot pedals and the drumsticks at least 40cm away from any interference sources. (Including the speaker that comes along). Strong interference may disable repositioning of the drumsticks. If this occurs, move away from the interference source and recalibrate.
- How to use TF card slot?**  
Press the 'H' and 'L' buttons to play music, and the 'M' button on the speaker can search music.



Digital Manual



Follow Us

# MOREOVER

Empowering Everyone to Play Music



Survey



Contact Us